

# TCA Executive Committee Meeting

October 9th, 2024

**tysons**  
community alliance

# Agenda

## I. Board Business

- Treasurer's Report / August Financials
- Written CEO Report

## II. Placemaking & Transportation Strategic Infrastructure

- Tysons-Scotts Run Gateway: Art Partnership with VDOT
- Tysons Community Circuit

## III. Executive Closed Session

# Treasurer's Report

**Tyson's Community Alliance  
YTD Budget Report FY2025  
As of Aug 31, 2024**

<b>Category</b>	<b>Year to Date Aug-24</b>	<b>FY25 Budget Jun-25</b>	<b>FY25 Budget Remaining Aug-24</b>
<b>Total Revenues</b>	<b>\$ 4,666,716</b>	<b>\$ 4,939,300</b>	<b>\$ 4,666,716</b>
<b><u>Expenses:</u></b>			
<b>Total Administrative</b>	<b>154,011</b>	<b>1,148,300</b>	<b>994,286</b>
<b>Total Communications &amp; Branding</b>	<b>183,310</b>	<b>844,477</b>	<b>661,167</b>
<b>Total Placemaking and Management</b>	<b>22,525</b>	<b>1,152,131</b>	<b>1,129,606</b>
<b>Total Research, Planning, &amp; Development</b>	<b>58,646</b>	<b>708,110</b>	<b>649,462</b>
<b>Total Transportation &amp; Mobility</b>	<b>103,873</b>	<b>1,086,285</b>	<b>982,411</b>
<b>Total Total Expenses</b>	<b>522,367</b>	<b>4,939,300</b>	<b>4,416,930</b>
<b>Revenue Minus Expenses</b>	<b>4,144,350</b>	<b>0</b>	<b>249,786</b>

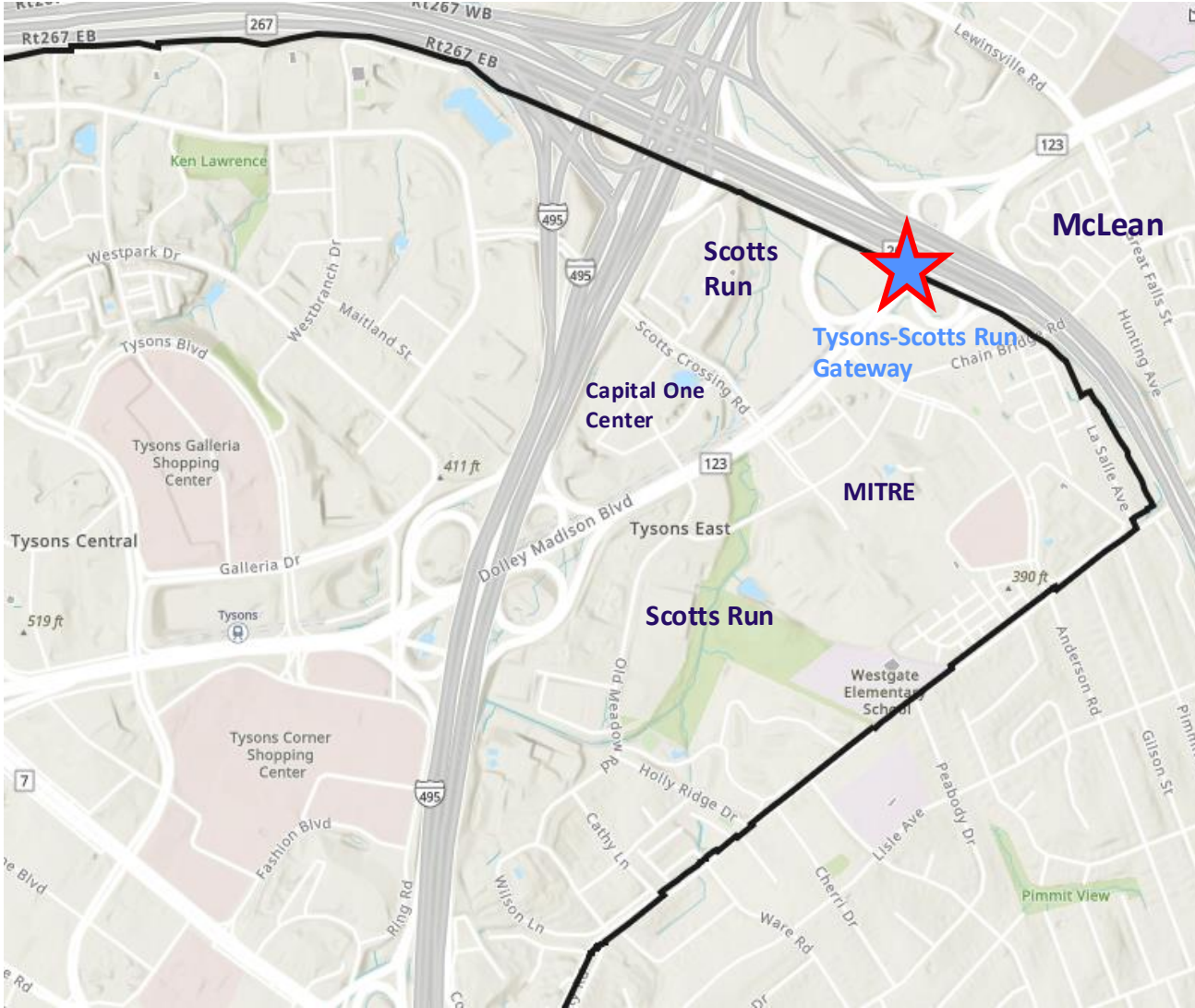


# Placemaking and Transportation Strategic Infrastructure Conversations

**tysons**  
community alliance

**Tysons-Scotts Run  
Gateway  
Art Partnership with VDOT**

# Project Background



From Tysons & Metrorail



Entering Tysons

# The Challenge & Opportunity



## Tysons is...

- Modern
- Diverse
- Growing
- Economic Driver
- Dramatic



## The site is ...

- City Unfolding
- Regional Bird's Eye View
- Center of Power



## Colors of Tysons...

- Silvery-Blue
- Brick
- Green

# Project Scope & Schedule

- Architectural enhancements for a routine VDOT bridge rehabilitation project
- Custom, site-specific artwork to highlight this important gateway in Tysons East

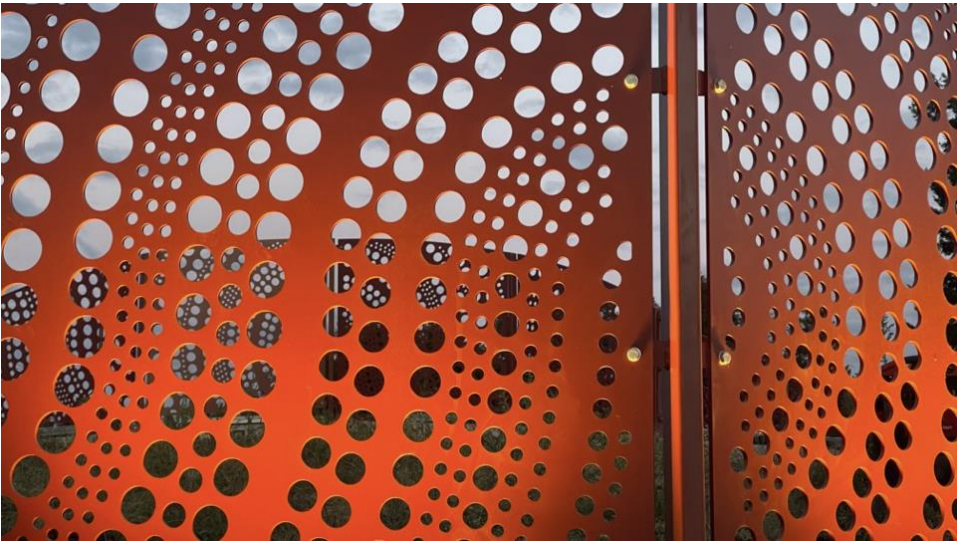
## TCA Project Schedule

- Oct 2024: Project Kickoff
- Oct - Dec 2024: Conceptual Design & Stakeholder Engagement Phase
- Jan - May 2025: Final Design Phase
- May 2025 - May 2027: Construction Phase





# Vicki Scuri Siteworks



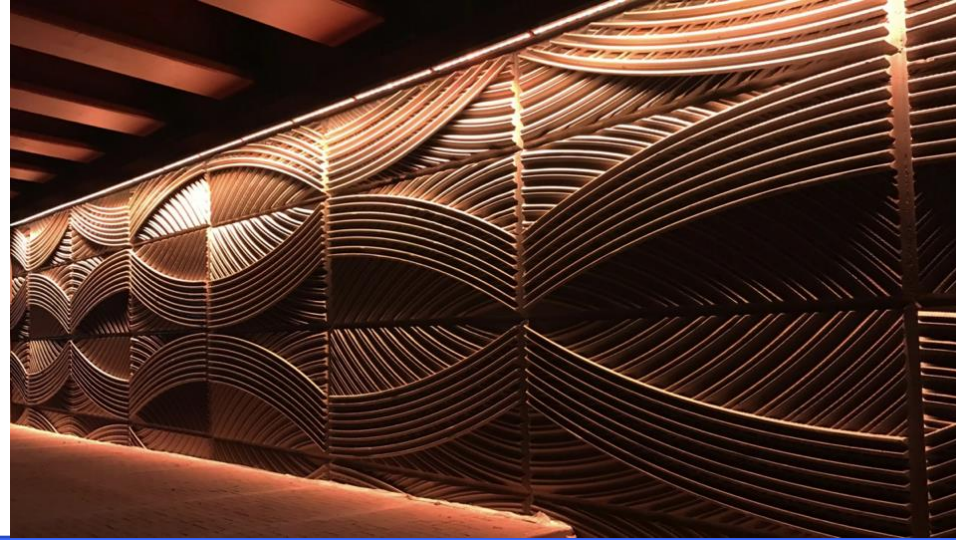
# Vicki Scuri Siteworks: Arlington, VA



Tysons-Scotts Run Gateway Art Partnership with VDOT



# Vicki Scuri Siteworks: Alaska & Kansas



Tyson-Scotts Run Gateway Art Partnership with VDOT

# Project Sponsorship & Funding

- **Artist contract**
  - Design Phase funded through FY25 TCA budget
- **Materials and labor for artwork**
  - Private Sponsorship
  - Public and Private Grants
  - Other ideas??
- **Maintenance of artwork for life of project**
  - Future TCA Operating Budget
- **Decommissioning if/when appropriate**

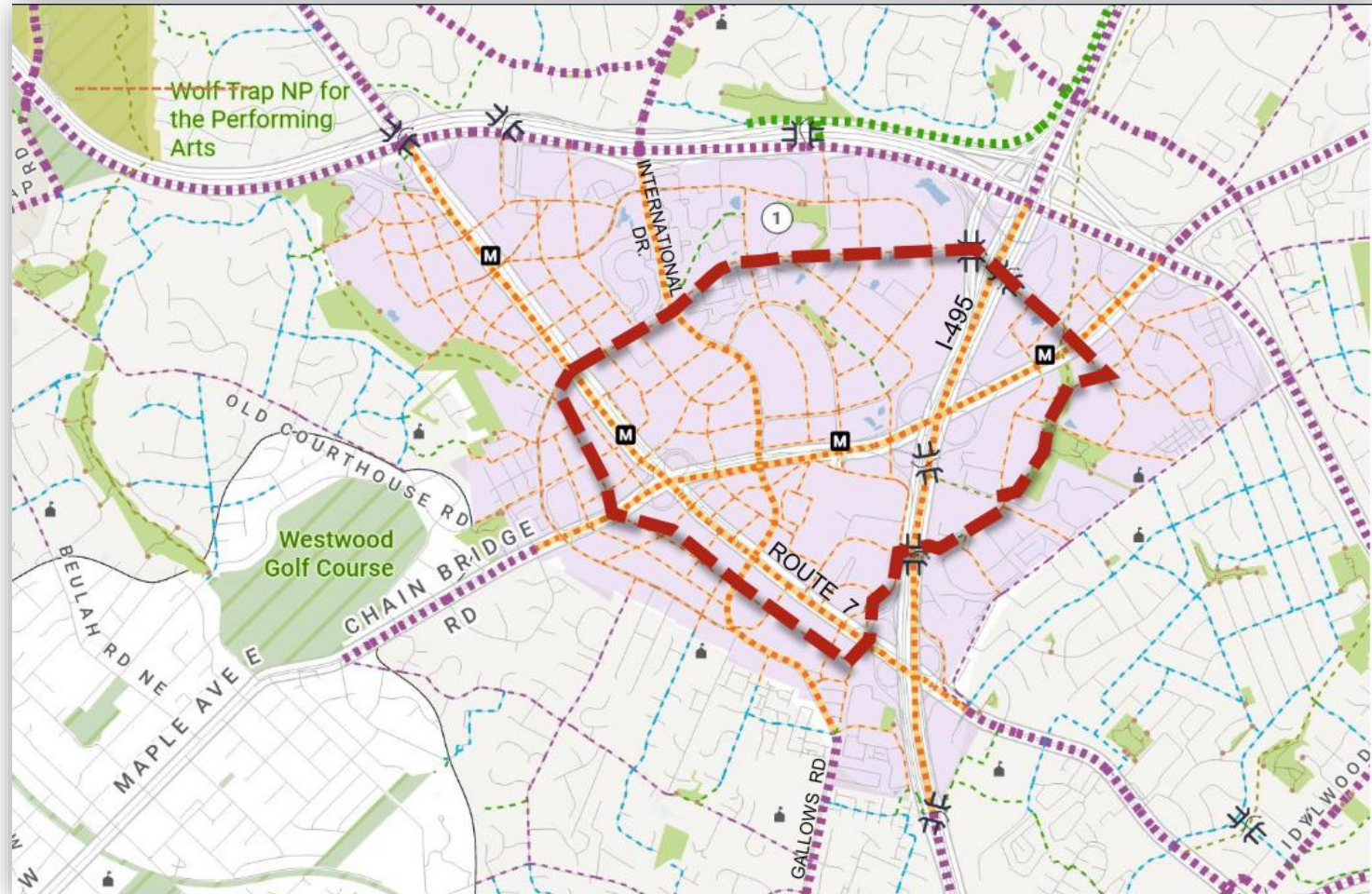


# Tyson's Community Circuit (CC)

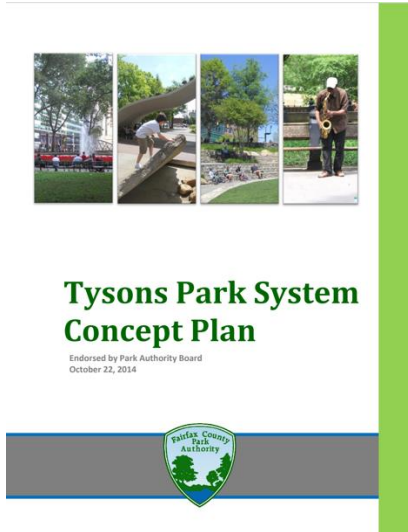


# The Idea

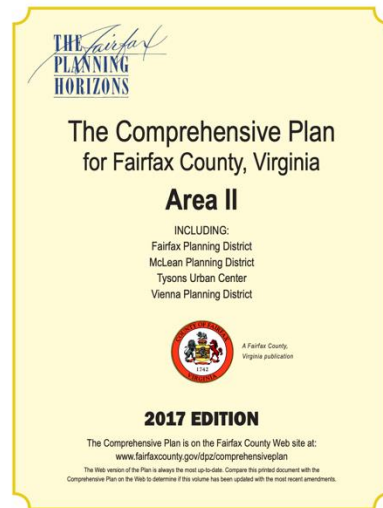
- 4.75-mile multimodal loop, connecting parks, civic spaces, and major points of interest.



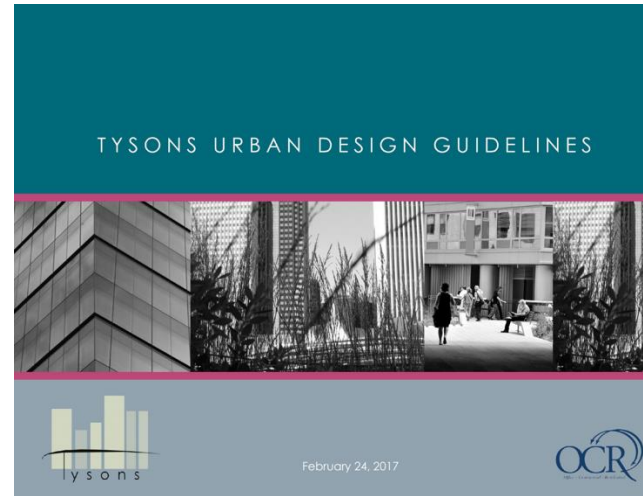
# Planning & Regulatory History



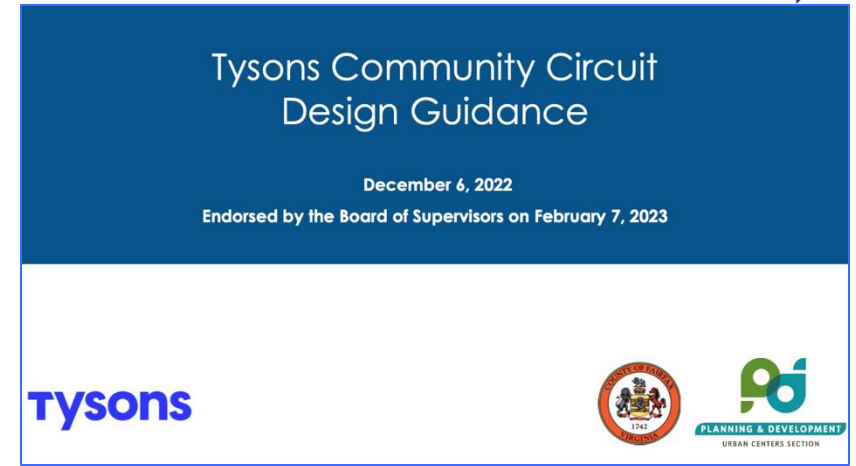
2014



2017



2017



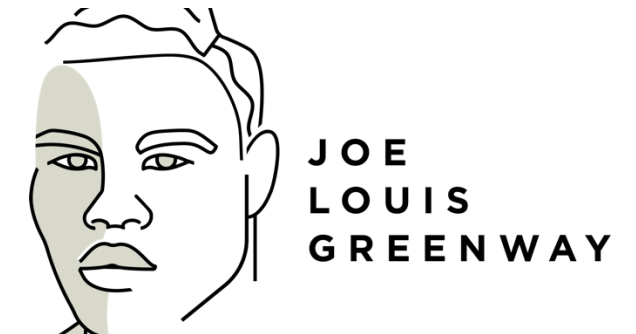
2023



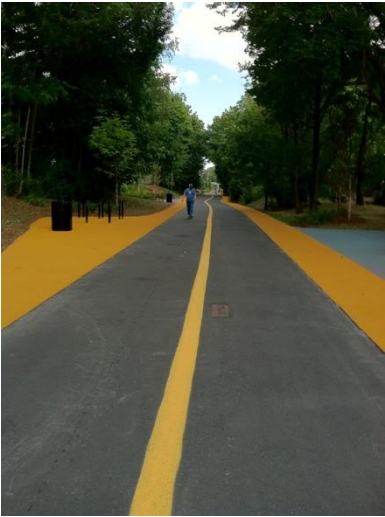
# National Precedents

Examples from USA:

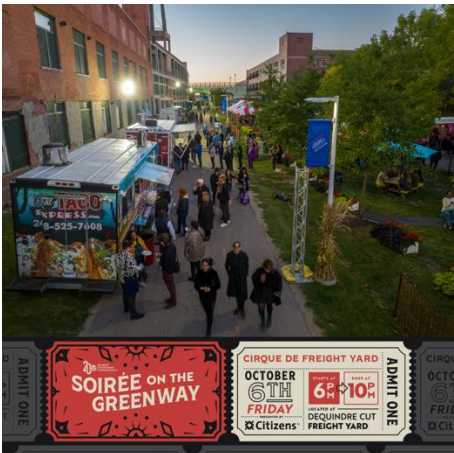
- Atlanta Beltline
- Brickline Greenway, St Louis
- Bloomingdale Trail/The 606 Chicago
- Indianapolis Cultural Trail
- Dequindre Cut & Joe Luis Greenway, Detroit



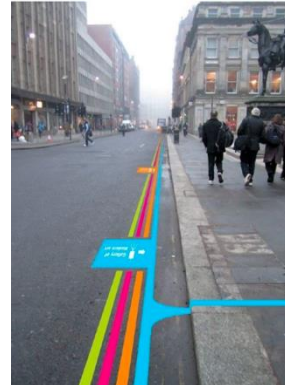
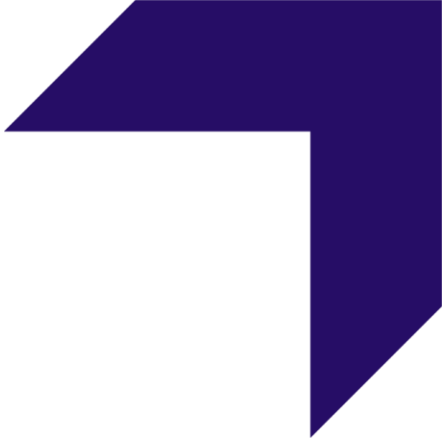
# Active Transportation & Connectivity



# Public Life Activation



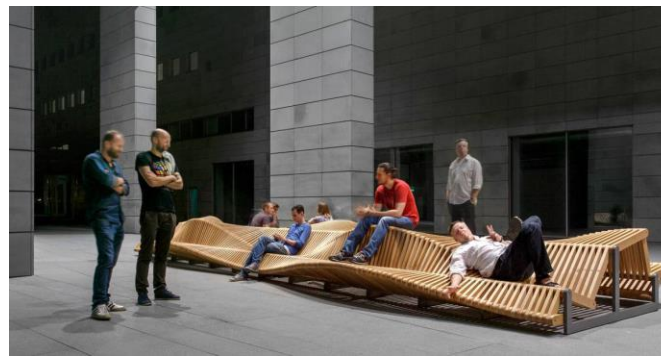
# Wayfinding & Identity



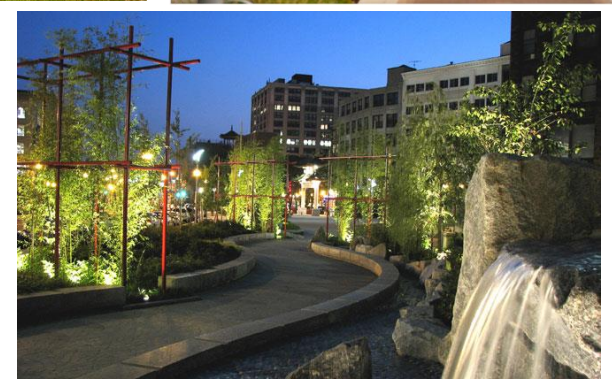
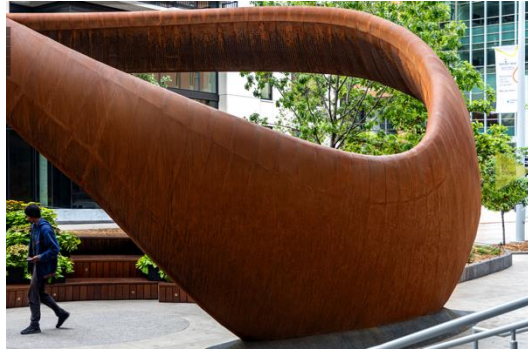
# Iconic Public Art Day & Night



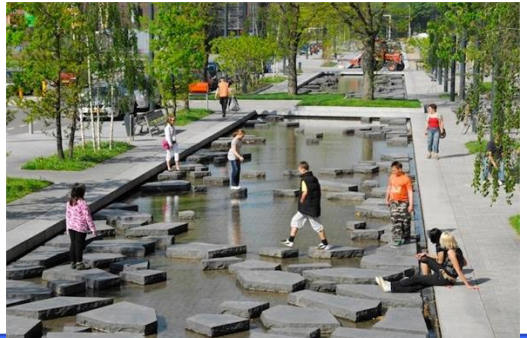
# Thoughtful Site Furnishings & Amenities



# Landscape Architecture & Design



# Fun, Surprise, Delight, Discovery, Curiosity, Play





# What function does this serve for Tysons?

- Creates a destination
- Improves mobility, induced demand for bike/ped
- Supports economic development
- Boosts real estate values
- Physically restructures & knits together Tysons
- Establishes a competitive differentiator – this is what world class districts do

=

**A more cohesive, dynamic, urban, globally relevant, interesting Tysons**

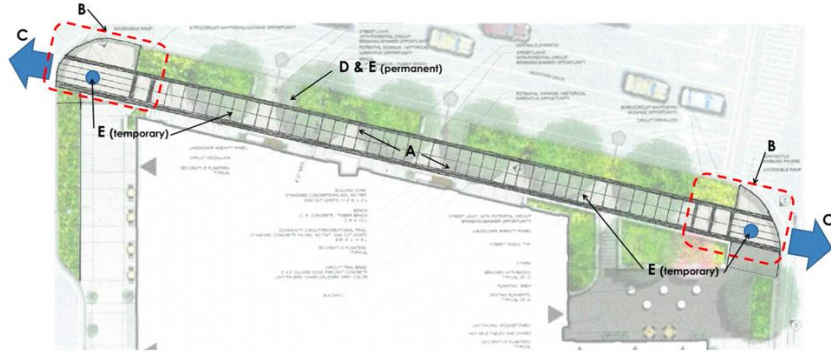
# FC Design Guidelines

## Common Design Elements

Common design elements for the entire Circuit are identified on the plan below. Each element is described in greater detail within this document.

**A** Paving **B** Intersections **C** Crosswalks **D** Site Furnishings and Amenities **E** Wayfinding Signage\*

\* Locate permanent wayfinding signage in landscape amenity panel; locate temporary wayfinding signage (decals and pavement markings) on paving, with a special focus at intersections.



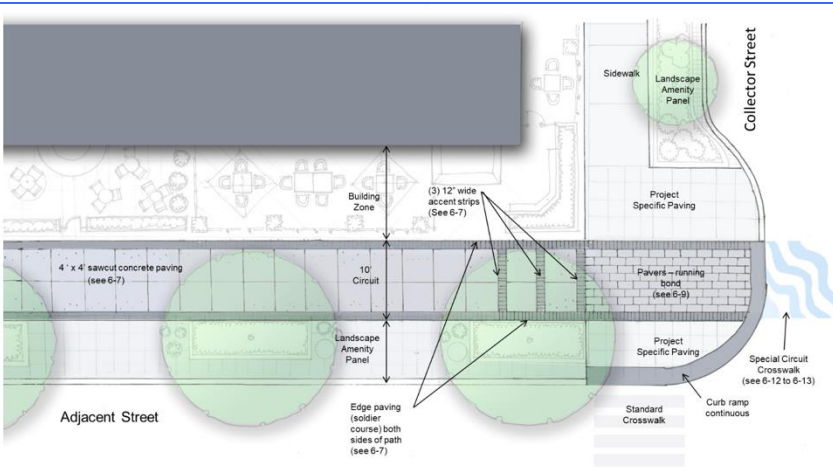
## Paving

Tysons is a mix of architectural styles and development patterns that date from the 1960s to today. Providing consistent paving along the entire Circuit will unify the diverse building frontages and site conditions. The selected common paving materials are easy to match and replace and are available from multiple sources. Standard concrete is the primary material. It should be edged (or "outlined") with one of the three unit paver options shown below, or an approved equal. "Outlining" the Circuit with pavers in a contrasting color (as seen in the photos at right) helps delineate the Circuit. Paving materials are described below:

- **Main Field of Paving:** 8' minimum width concrete paving (standard color) with a 4' x 4' sawcut paving pattern.



- **Edge Paving:** 12" wide band (each side) using a 4" x 12" or 6" x 12" charcoal gray soldier course of concrete unit pavers. Also used as accent strips. See pages 6-10 and 6-11.



- A** Unilock, Umbriano paver, Grenada White
- B** Hanover, Prest Paver, Natural color
- C** Techo Block, HD<sup>2</sup>, Beige Cream

## Tysons Community Circuit Design Guidance

December 6, 2022

Endorsed by the Board of Supervisors on February 7, 2023

tysons

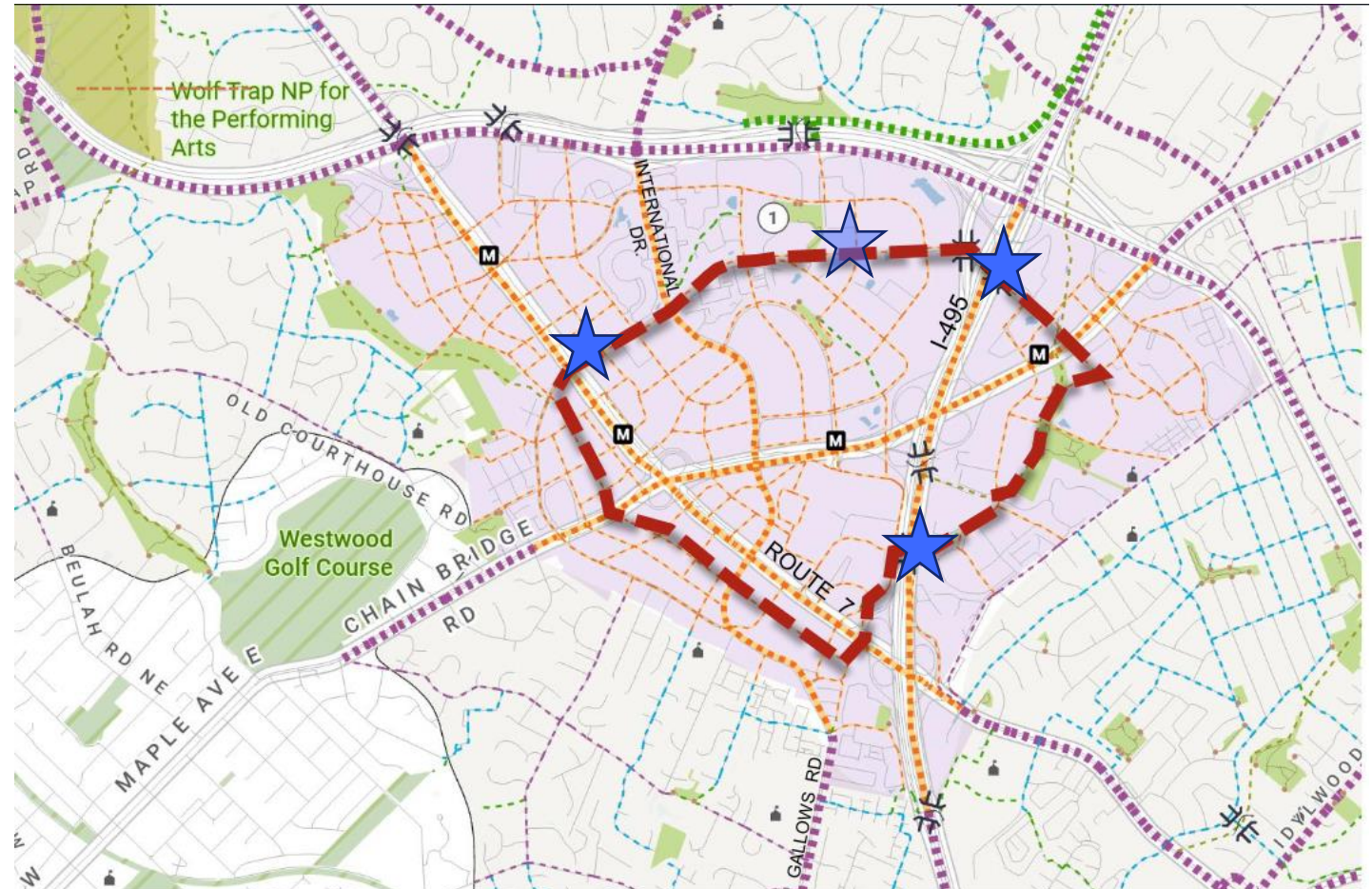


- Paving
- Intersection treatments
- Crosswalks
- Site furnishings & amenities
- Wayfinding signage

# Existing CC Sections

In process	Length (mi)
Built	0.95
Designed & approved	0.2
<b>Total</b>	<b>1.15</b>

<b>Total length</b>	<b>4.75</b>
Built, designed, approved	-1.15
<b>Remaining</b>	<b>3.60</b>



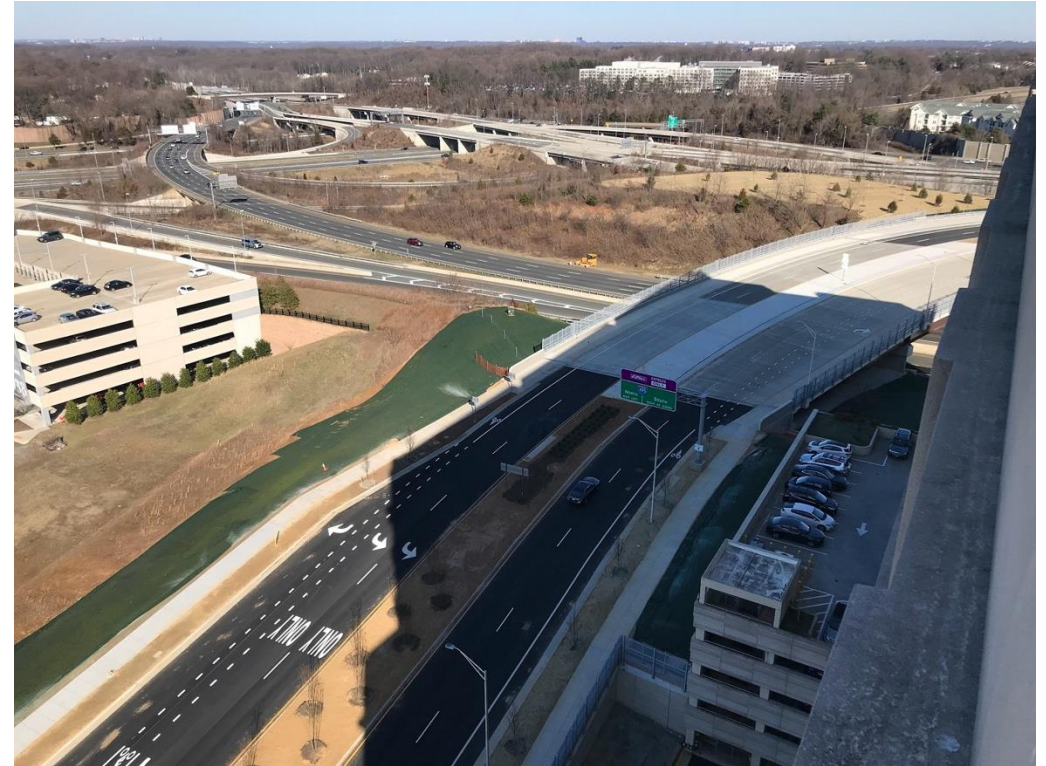
# Existing CC Sections

- Ped bridge over Beltway / 495



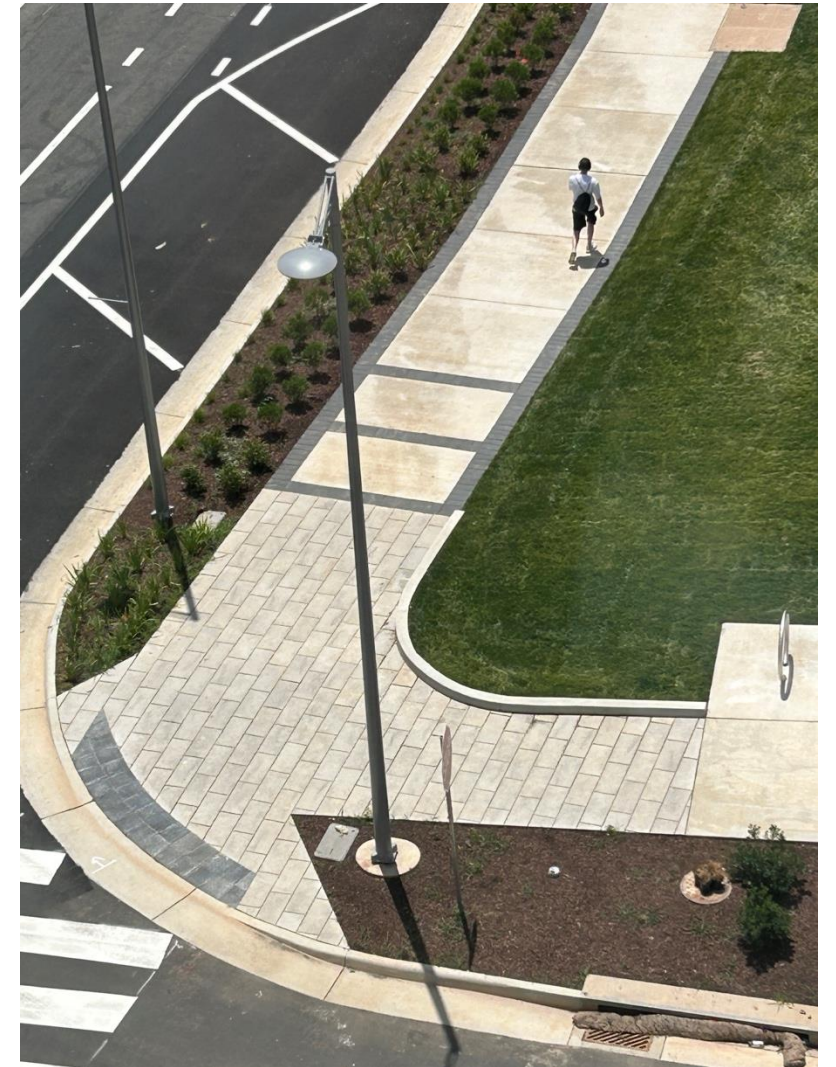
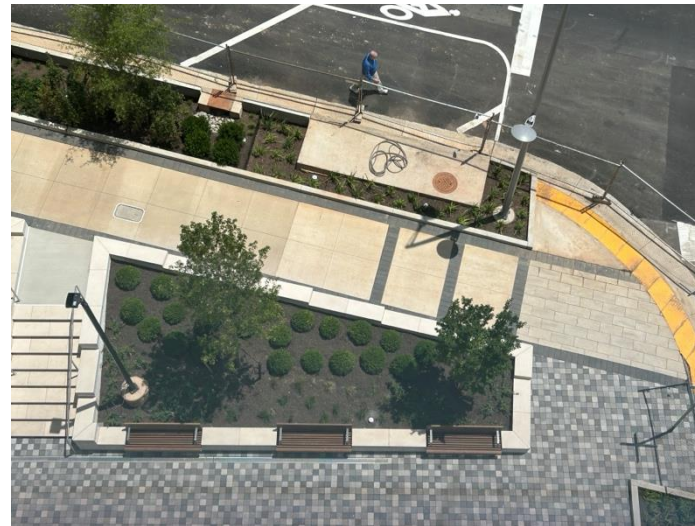
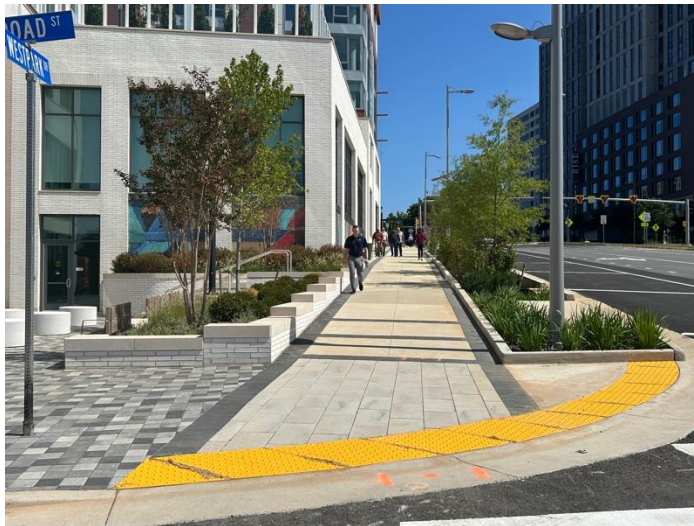
# Existing CC Sections

- Jones Branch Connector (Scotts Crossing Rd)



# Existing CC Sections

- Westpark Dr between Greensboro & Broad, north side of street



# Becoming a TCA signature project

- TCA as the incubator & implementing organization of the CC
- Touches 4 of 5 TCA Strategic Plan Themes

## TCA

- Host organization
- Staff time: Project lead / PM / convener / facilitator
- Consultant management & procurement

## FC

- Staff time: meetings/workshops
- Thought partnership
- Assist w/document consolidation & data needs
- Facilitate permitting & approvals
- Construction management

# Becoming a TCA signature project

## Now

1-1.5 yrs

7/25-10/26

- Create funding framework plan
- Assemble land survey
- ID & map proffered phases
- ID prime “pull ahead” sections

## Near

2 yrs

10/26-10/28

- Advanced concept design
- Design pull ahead sections
- Establish new brand
- Programming plan
- Apply for \$\$

## Far

Indefinite

2029+

- Permit & construct pull ahead sections
- Start maintaining & programming
- Enhance w/ wayfinding, site furniture, amenities
- Build an endowment



# Becoming a TCA signature project

**Now**

1-1.5 yrs

7/25-10/26



**Near**

2 yrs

10/26-10/28



**Far**

Indefinite

2029+

## TCA Resources

- \$100-\$200k in consulting fees (LA, Surveyor, A/E)
- Half an FTE on Placemaking team

## TCA Resources

- \$100-\$200k in consulting fees (LA, Surveyor, A/E)
- Half an FTE on Placemaking team

## TCA Resources

- Contracted maintenance crew
- 1 dedicated FTE to run the CC
- TBD \$\$ for consultants

# Executive / Closed Session

**tysons**  
community alliance